



Superior Genetics

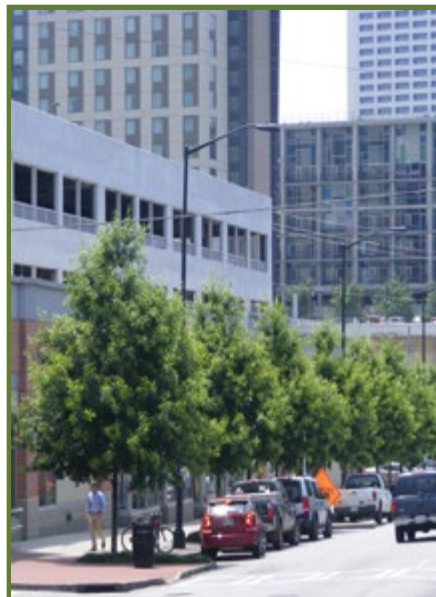
- Numerous superior selections have been chosen for their specific strengths and attributes and are available as own-root clones.



- Own-root clones provide superior genetics and performance.



Esplanade® Nuttall Oak



Panache® Shumard Oak



Prodigy® Fringetree



Superior Genetics

Stonecrest Mall
- Atlanta, GA
seedling willow oak

Cox Communications
- Atlanta, GA
Hightower® Willow Oak



Why are own-root clones more dependable and predictable?

*"Since seed genetics vary widely, every tree will vary. This can lead to different growth rates, branch structure, time of leaf-out, and fall color. Trees that look matched in the nursery might not look matched a few years after planting." - Jim Urban, **Up By Roots***

DIVERSITY

LONGEVITY

DEPENDABILITY

IMPROVED QUALITY OF LIFE



Superior Genetics

Own-root Clones are
PREDICTABLE



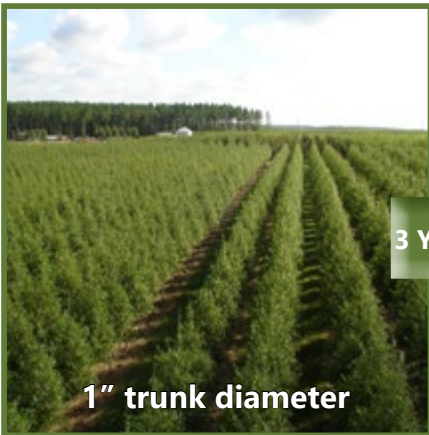
May 1999 - Stem cutting from sustainable tree



May 1999 - Root system begins in greenhouse



September 1999 - Own-root clonal stem cutting



1" trunk diameter

May 2001 - Predictable trees from own-root clones



4" trunk diameter

May 2004 - Predictable own-root clonal trees in the landscape



12" trunk diameter

September 2014 - Select Sustainable Trees are predictable and dependable

"Tree Introductions' patience, persistence, and propagation savvy open the landscape portal to the world of cultivar oaks. Oaks on their own roots with genetically programmed uniform characteristics including growth habit, summer and fall leaf colors, clean leaf drop in autumn, ease-of-transplanting, and pest resistance guarantee success in commercial and residential landscapes."

- Dr. Michael Dirr